

Member Report – Markham Stouffville Hospital

MEMBER ORGANIZATIONS:

- Alberta Children's Hospital, AB
- Alberta Health Services, AB
- Baycrest, ON
- Centre for Addiction and Mental Health, ON
- Chinook Regional, AB
- Cold Lake Health Care, AB
- Credit Valley Hospital, ON
- Crowsnest Pass, AB
- Drumheller Health Care, AB
- Grand River Hospital, ON
- Halton Healthcare Services, ON
- Headwaters Health Care Centre, ON
- ★ Humber River Hospital, ON
- Kingston General Hospital, ON
- Mackenzie Health, ON
- Markham Stouffville Hospital, ON
- Michael Garron Hospital, ON
- Muskoka Algonquin Healthcare, ON
- North York General Hospital, ON
- Northern Lights, AB
- Ontario Shores, ON
- Orillia Soldiers' Memorial, ON
- Providence Healthcare, ON
- Red Deer Regional, AB
- Rockyview Hospital, AB
- Ross Memorial Hospital, ON
- Runnymede Healthcare Centre, ON
- Sacred Heart, AB
- Shared Services West, ON
- SickKids, ON
- Stevenson Memorial, ON
- Sturgeon Hospital, AB
- Trillium Health Partners, ON
- Wetaskiwin Hospital, AB
- Waypoint, ON
- West Park Healthcare Centre, ON
- Westview Health Care, AB
- William Osler Health System, ON
- William J Cadzow Healthcare, AB
- Women's College Hospital, ON

Your 2017 Energy Performance

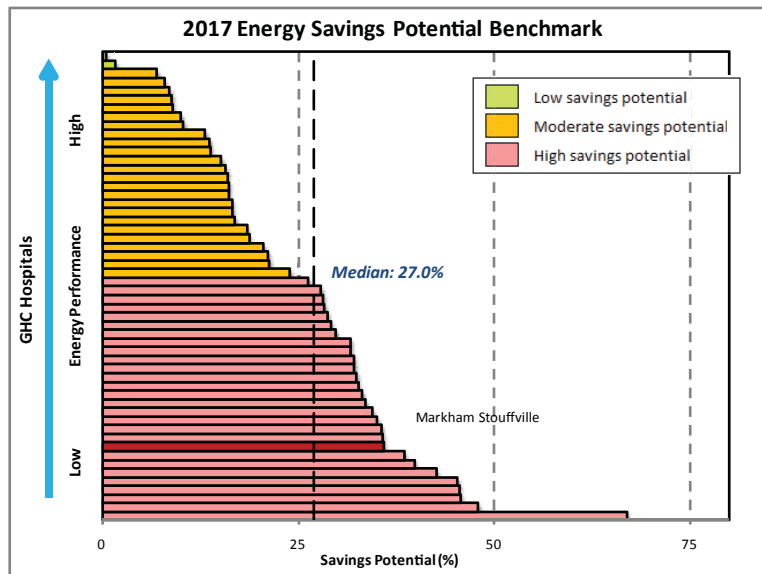
Even with recent improvements, Markham Stouffville continues to show among the high potential saving hospitals.

Your Savings Potential \$/year:

Electricity	\$610,099
Natural Gas	\$492,180
Water	\$101,301
TOTAL	\$1,203,580

GHG Emissions (tonnes):

2017 Reduction	354
Reduction Potential	3,262



The savings potential chart shows how your sites are positioned relative to other member facilities, and progressing towards their target energy use. Hospitals that reach their targets are awarded gold (target reached) and those that are close are awarded silver (within 5% of target)

Your Energy and Water Targets

Your target energy, water and dollar savings are shown below. This is how much you will save by achieving a good standard of energy performance. The target for each energy and water component is updated every year based on the top 25% performance standard from similar hospital types. Targets are adjusted for site-specific variables including heating and cooling sources, laundry and research space.

Hospital	Electricity (kWh/ft2)				Thermal (ekWh/ft2)				Total Energy (ekWh/ft2)		Energy Savings Potential	
	Base		Cooling		Base		Heating		2017	Target	%	\$/year
	2017	Target	2017	Target	2017	Target	2017	Target				
Markham Stouffville	23.9	19.4	3.4	2.1	29.4	19.0	26.1	12.6	82.7	53.1	36%	\$1,102,278

Base components relate to systems that run throughout the year regardless of weather, such as lighting, medical or IT equipment, domestic hot water and fans. The cooling component is additional energy used in summer for air conditioning, and heating is the extra energy used for heat and humidification during winter months.

Hospital	Water (litres/ft2)				Water Savings Potential	
	Base		Cooling		%	\$/year
	2017	Target	2017	Target		
Markham Stouffville	169.0	140.1	32.0	21.6	20%	\$101,301

PROGRAM SPONSORS:



For more information on membership or sponsorship opportunities, contact:

Jason Choy
jason.choy@trca.on.ca

Follow us on Twitter
@GreeningHealthC



THE PROGRAM

Founded in 2003, Greening Health Care is the largest program of its kind in North America, helping hospitals work together to lower their energy costs, raise their environmental performance and contribute to the health and well-being of their communities. Members manage data, assess their performance and track savings using a powerful online system. They share knowledge and best practices through workshops, webinars and networking to help plan, implement and verify improvements. This is a program of The Living City managed by Toronto and Region Conservation.

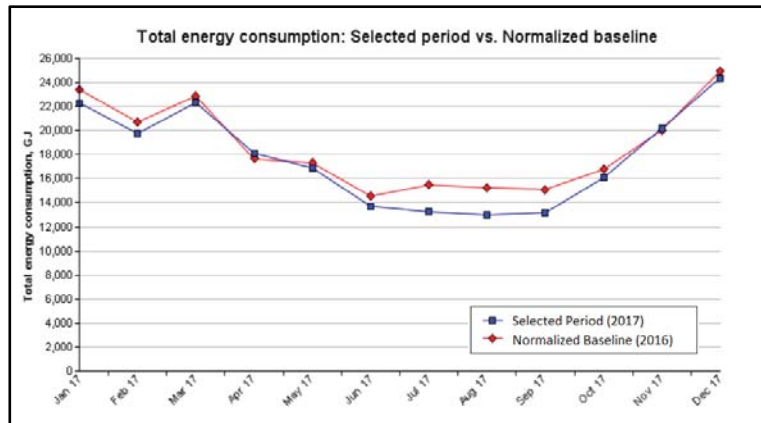
www.greeninghc.com

Making the Connections

The building systems and conservation actions you should focus on for the biggest savings are determined by your savings targets. Savings components shaded in red have high savings potential, amber have moderate potential, and green are your most efficient with little or no potential. Checklists are available to assist you with possible energy efficiency measures associated with each component.

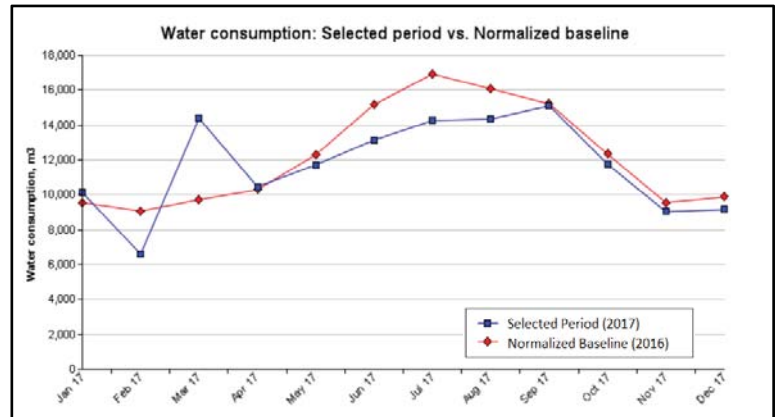
Your 2017 Savings

Savings are monitored through the Greening Health Care online reporting system which you can access at any time at <https://ghc.enerlife.com>. The blue line is your 2017 monthly use, and is compared with the red line which is your 2016 weather-normalized baseline. Real savings were achieved in months where the blue line is below the red.



Significant energy savings were recorded, with the largest occurring between July and September.

There were significant water savings in 2017, mostly occurring in the summer months.



Summary of 2017 Savings

	Electricity	Gas	Water	Total	%
Totals	\$215,976	\$23,235	\$21,776	\$260,988	4.9%

Legend:

Savings
Increases

GREENING HEALTH CARE IS
MANAGED BY:



TECHNICAL
DIRECTION BY:

