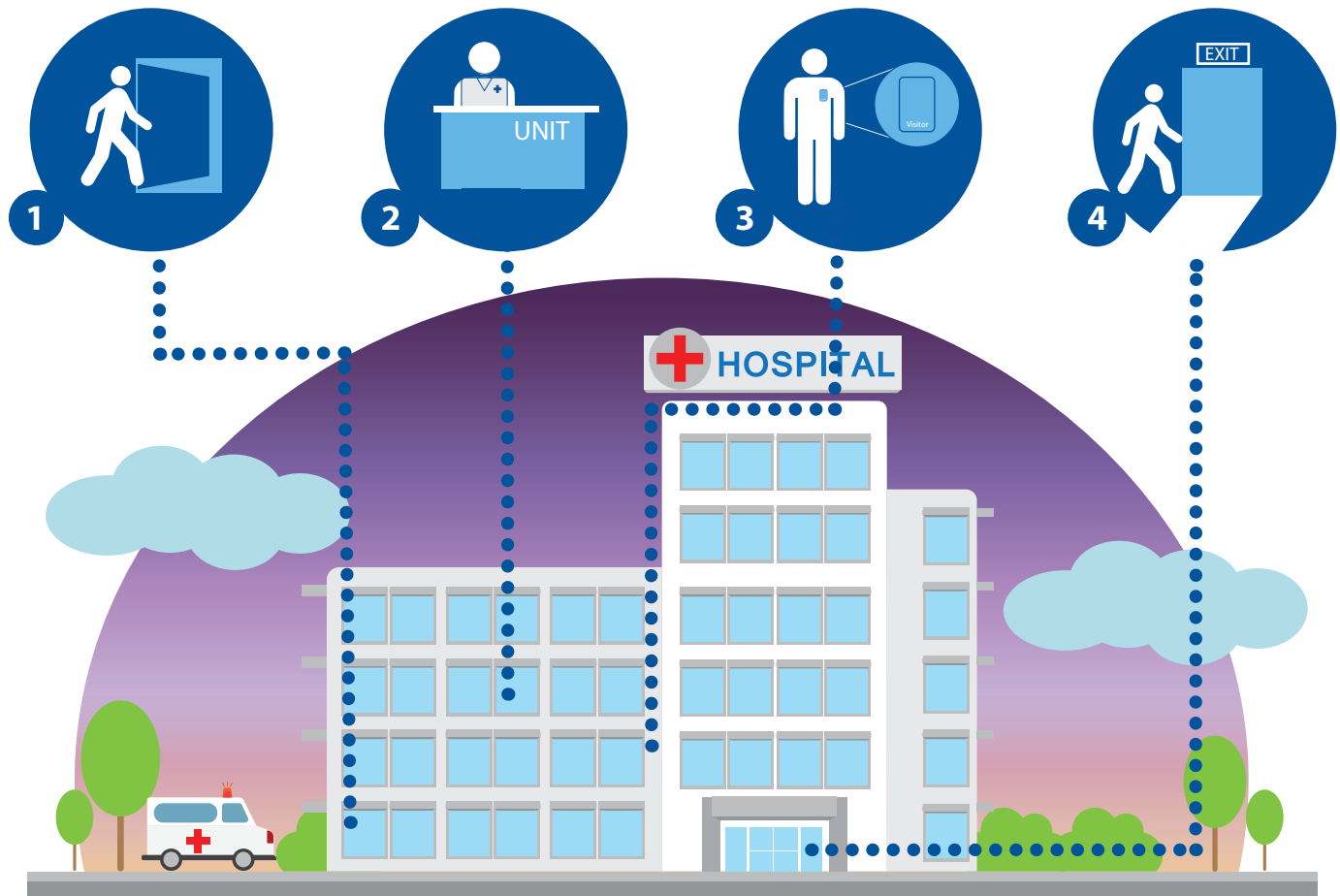


# Markham Stouffville Hospital: After Hours Visiting Policy

General visiting hours: 11:00 am – 8:30 pm daily

Designated care partners, identified as a member of the patient's care team are given 24/7 access



## 1 Enter through the Emergency Department (ED)

- Sign-in with security
- Put on ID sticker, have it visible at all times
- Security will call the unit to let them know you are here

## 2 Head straight to the unit

- Check-in at nursing station on the unit

## 3 Keep visitor sticker visible at all times

- Stay in designated areas i.e., Unit, Cafeteria, Tim Horton's
- Reminder: quiet time is 10 pm - 6 am daily

## 4 Exiting - Leave through the ED

- Sign-out with security
- All hospital doors are locked at 9 pm, only the ED doors are open

Select departments have specific visiting hours/criteria that take precedent over this policy.